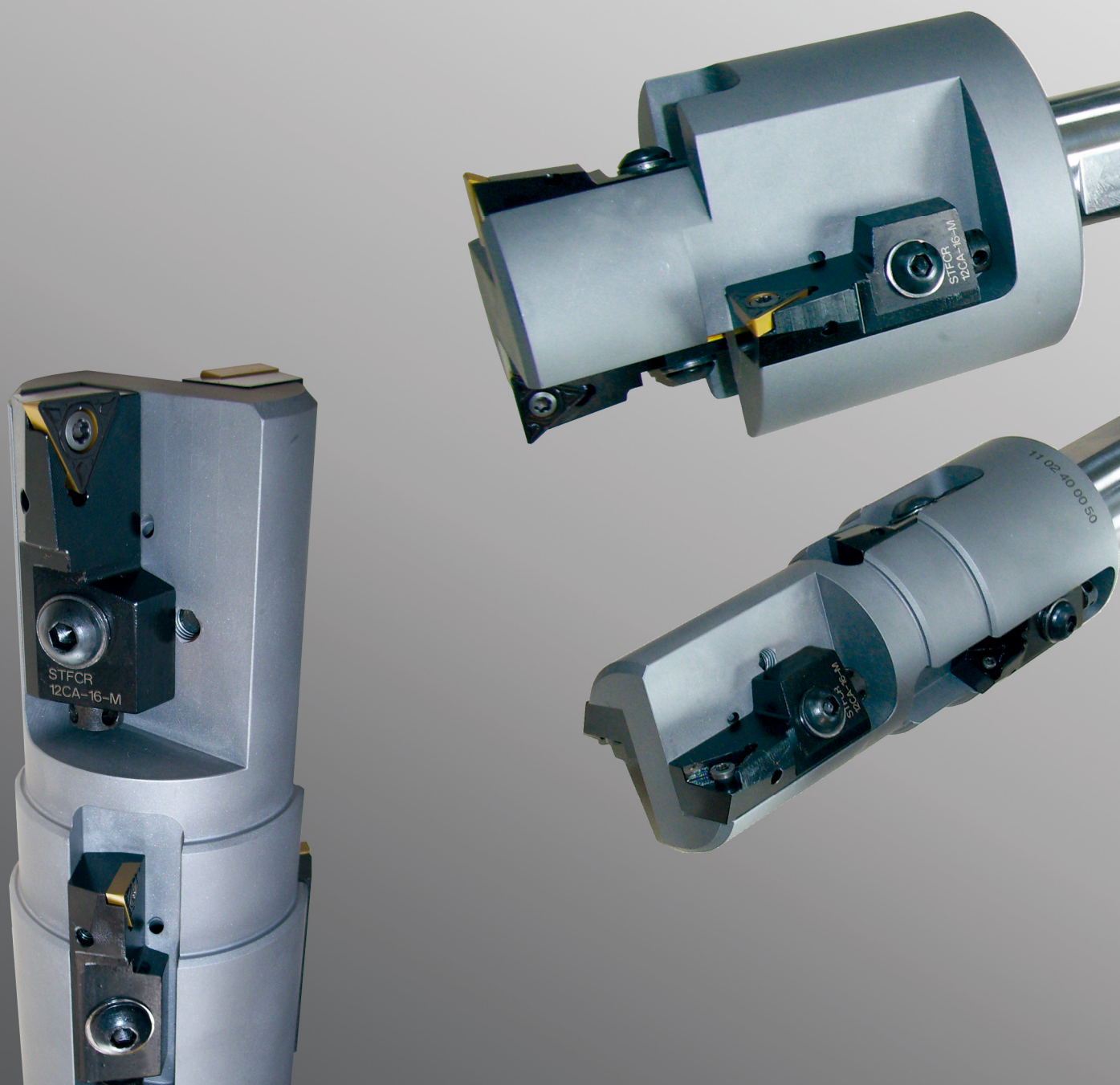


CARTOUCHES

Full TECH

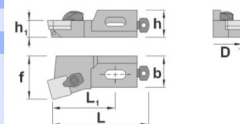
OUTILS SPECIAUX



CKSP 75°



REF.	D	h	h1	L	L1	f	b	SP..
CSKP R/L 10CA-09	40	15	10	50	30	14	11	0903..
CSKP R/L 12CA-12	50	20	12	55	35	20	16	1203..
CSKP R/L 16CA-12	55	25	16	63	38	25	20	1203..

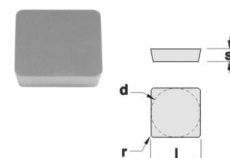


REF.

REF.	l	s	d
CSKP R/L 10CA-09	234	525	- - 118 154 502 286 192 504
CSKP R/L 12CA-12	235	503	- - 118 157 525 286 186 504
CSKP R/L 16CA-12	235	503	314 402 119 157 525 288 190 505

REF.

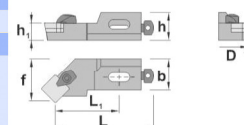
SP. 0903..	9,52	3,18	9,52
SP. 1203..	12,70	3,18	12,70



CSSP 45°



REF.	D	h	h1	L	L1	f	b	SP..
CSSP R/L 10CA-09	40	15	10	44	24	14	11	0903..
CSSP R/L 12CA-12	50	20	12	47	27	20	16	1203..
CSSP R/L 16CA-12	55	25	16	53	28	25	20	1203..

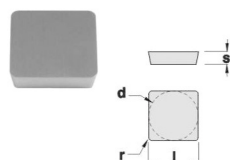


REF.

REF.	l	s	d
CSSP R/L 10CA-09	234	525	- - 118 154 502 286 192 504
CSSP R/L 12CA-12	235	503	- - 118 157 525 286 186 504
CSSP R/L 16CA-12	235	503	314 402 119 157 525 288 190 505

REF.

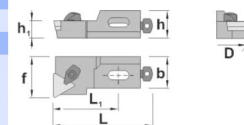
SP. 0903..	9,52	3,18	9,52
SP. 1203..	12,70	3,18	12,70



CTFP 90°



REF.	D	h	h1	L	L1	f	b	TP..
CTFP R/L 10CA-11	40	15	10	50	30	14	11	1103..
CTFP R/L 12CA-16	50	20	12	55	35	20	16	1603..
CTFP R/L 16CA-16	55	25	16	63	38	25	20	1603..

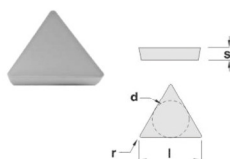


REF.

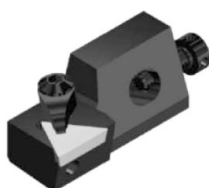
REF.	l	s	d
CTFP R/L 10CA-11	234	525	- - 118 154 502 286 192 504
CTFP R/L 12CA-16	235	503	- - 118 157 525 286 186 504
CTFP R/L 16CA-16	235	503	317 402 119 157 525 288 190 505

REF.

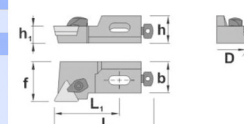
TP. 1103..	11,00	3,18	6,35
TP. 1603..	16,50	3,18	9,52



CTGP 90°



REF.	D	h	h1	L	L1	f	b	TP..
CTGP R/L 10CA-11	40	15	10	50	30	14	11	1103..
CTGP R/L 12CA-16	50	20	12	55	35	20	16	1603..
CTGP R/L 16CA-16	60	25	16	63	38	25	20	1603..

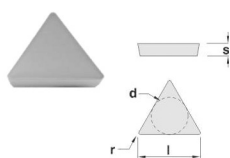


REF.

REF.	l	s	d
CTGP R/L 10CA-11	234	525	- - 118 154 502 286 192 504
CTGP R/L 12CA-16	235	503	- - 118 157 525 286 186 504
CTGP R/L 16CA-16	235	503	317 402 119 157 525 288 190 505

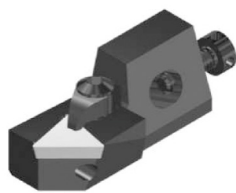
REF.

TP. 1103..	11,00	3,18	6,35
TP. 1603..	16,50	3,18	9,52

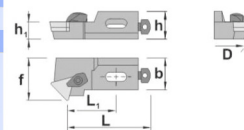




CTSP 45°



REF.	D	h	h1	L	L1	f	b	TP..
CTSP R/L 10CA-11	40	15	10	44	24	14	11	1103..
CTSP R/L 12CA-16	50	20	12	47	27	20	16	1603..
CTSP R/L 16CA-16	55	25	16	53	28	25	20	1603..



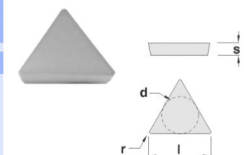
REF.



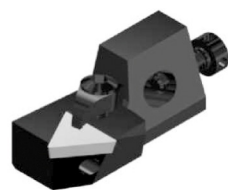
CTSP R/L 10CA-11	234	525	-	-	118	154	502	286	192	504
CTSP R/L 12CA-16	235	503	-	-	118	157	525	286	186	504
CTSP R/L 16CA-16	235	503	317	402	119	157	525	288	190	505

REF.

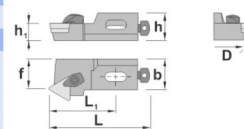
REF.	l	s	d
TP. 1103..	11,00	3,18	6,35
TP. 1603..	16,50	3,18	9,52



CTTP 60°



REF.	D	h	h1	L	L1	f	b	TP..
CTTP R/L 10CA-11	40	15	10	50	30	9	11	1103..
CTTP R/L 12CA-16	50	20	12	55	35	13	16	1603..
CTTP R/L 16CA-16	55	25	16	63	38	15	20	1603..



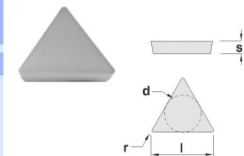
REF.



CTTP R/L 10CA-11	234	525	-	-	118	154	502	286	192	504
CTTP R/L 12CA-16	235	503	-	-	118	157	525	286	186	504
CTTP R/L 16CA-16	235	503	317	402	119	157	525	288	190	505

REF.

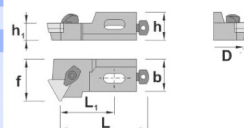
REF.	l	s	d
TP. 1103..	11,00	3,18	6,35
TP. 1603..	16,50	3,18	9,52



CTWP 30°



REF.	D	h	h1	L	L1	f	b	TP..
CTWP R/L 10CA-11	40	15	10	44	24	14	11	1103..
CTWP R/L 12CA-16	50	20	12	47	27	20	16	1603..
CTWP R/L 16CA-16	55	25	16	53	28	25	20	1603..



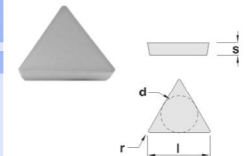
REF.



CTWP R/L 10CA-11	234	525	-	-	118	154	502	286	192	504
CTWP R/L 12CA-16	235	503	-	-	118	157	525	286	186	504
CTWP R/L 16CA-16	235	503	317	402	119	157	525	288	190	505

REF.

REF.	l	s	d
TP. 1103..	11,00	3,18	6,35
TP. 1603..	16,50	3,18	9,52





PCFN 90°

REF.	D	h	h1	L	L1	f	b	CN..
PCFN R/L 16CA-12	60	25	16	63	38	25	20	1204..
PCFN R/L 20CA-12	70	30	20	70	40	25	20	1606..
PCFN R/L 25CA-16	100	35	25	100	50	32	25	1606..

REF.	REF.			
PCFN R/L 16CA-12	842 173 503 302 412 119 157 002 525 288 190 505	CN.. 1204..	12,90	4,76 12,70
PCFN R/L 20CA-12	812 163 503 302 412 119 156 002 503 288 190 505	CN.. 1606..	16,10	6,35 15,88
PCFN R/L 25CA-16	816 170 503 366 415 120 158 005 504 290 191 526			

PCLN 95°

REF.	D	h	h1	L	L1	f	b	CN..
PCLN R/L 16CA-12	60	25	16	63	38	25	20	1204..
PCLN R/L 20CA-12	70	30	20	70	40	25	20	1204..
PCLN R/L 25CA-16	100	35	25	100	50	32	25	1606..

REF.	REF.			
PCLN R/L 16CA-12	842 173 503 302 412 119 157 002 525 288 190 505	CN.. 1204..	12,90	4,76 12,70
PCLN R/L 20CA-12	812 163 503 302 412 119 156 002 503 288 190 505	CN.. 1606..	16,10	6,35 15,88
PCLN R/L 25CA-16	816 170 503 366 415 120 158 005 504 290 191 526			

PSKN 75°

REF.	D	h	h1	L	L1	f	b	SNM..
PSKN R/L 12CA-12	50	20	12	55	35	20	16	1204..
PSKN R/L 16CA-12	60	25	16	63	38	25	20	1204..
PSKN R/L 20CA-12	70	30	20	70	40	25	20	1204..
PSKN R/L 25CA-15	100	35	25	100	50	32	25	1506..

REF.	REF.			
PSKN R/L 12CA-12	832 171 525 - - 118 157 - 525 286 186 504	SNM.. 1204..	12,70	4,76 12,70
PSKN R/L 16CA-12	842 173 503 313 412 119 156 002 525 288 190 505	SNM.. 1506..	15,88	6,35 15,88
PSKN R/L 20CA-12	812 163 503 313 412 119 156 002 503 288 190 505			
PSKN R/L 25CA-15	816 170 503 355 415 120 158 005 504 290 191 526			

PSRN 75°

REF.	D	h	h1	L	L1	f	b	SNM..
PSRN R/L 16CA-12	60	25	16	63	38	25	25	1204..
PSRN R/L 20CA-12	70	30	20	70	40	25	25	1204..

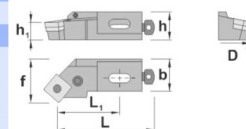
REF.	REF.			
PSRN R/L 16CA-12	842 173 503 313 412 119 157 002 525 288 190 505	SNM.. 1204..	12,70	4,76 12,70
PSRN R/L 20CA-12	812 163 503 313 412 119 156 002 503 288 190 505			



PSSN 45°

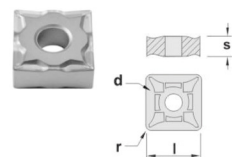


REF.	D	h	h1	L	L1	f	b	SNM..
PSSN R/L 12CA-12	50	20	12	47	27	20	16	1204..
PSSN R/L 16CA-12	60	25	16	53	28	25	20	1204..
PSSN R/L 20CA-12	70	30	20	60	30	25	20	1204..



REF.												
PSSN R/L 12CA-12	832	171	525	-	-	118	157	-	525	286	186	504
PSSN R/L 16CA-12	842	173	503	313	412	119	157	002	525	288	190	505
PSSN R/L 20CA-12	812	163	503	313	412	119	156	002	503	288	190	505

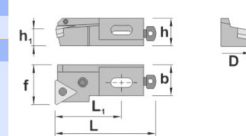
REF.	l	s	d
SNM.. 1204..	12,70	4,76	12,70



PTFN 90°

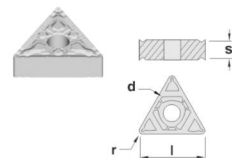


REF.	D	h	h1	L	L1	f	b	TNM..
PTFN R/L 12CA-16	50	20	12	55	35	20	16	1604..
PTFN R/L 16CA-16	60	25	16	63	38	25	20	1604..
PTFN R/L 20CA-22	70	30	20	70	40	25	20	2204..
PTFN R/L 25CA-22	100	35	25	100	50	32	25	2204..



REF.												
PTFN R/L 12CA-16	836	161	502	-	-	118	157	-	525	286	186	504
PTFN R/L 16CA-16	809	162	525	336	409	119	157	009	525	288	190	505
PTFN R/L 20CA-22	812	163	503	323	412	119	156	002	503	288	190	505
PTFN R/L 25CA-22	812	163	503	323	412	120	158	002	504	290	191	526

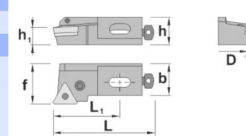
REF.	l	s	d
TNM.. 1604..	16,50	4,76	9,52
TNM.. 2204..	22,00	4,76	12,70



PTGN 90°

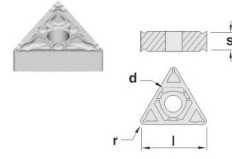


REF.	D	h	h1	L	L1	f	b	TNM..
PTGN R/L 12CA-16	50	20	12	55	35	20	16	1604..
PTGN R/L 16CA-16	60	25	16	63	38	25	20	1604..
PTGN R/L 20CA-22	70	30	20	70	40	25	20	2204..



REF.												
PTGN R/L 12CA-16	836	161	502	-	-	118	157	-	525	286	186	504
PTGN R/L 16CA-16	809	162	525	336	409	119	156	009	525	288	190	505
PTGN R/L 20CA-22	812	163	503	323	412	119	156	002	503	288	190	505

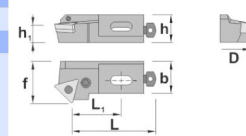
REF.	l	s	d
TNM.. 1604..	16,50	4,76	9,52
TNM.. 2204..	22,00	4,76	12,70



PTSN 45°

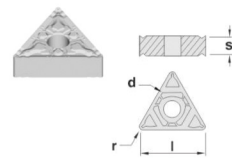


REF.	D	h	h1	L	L1	f	b	TNM..
PTSN R/L 12CA-16	50	20	12	47	27	20	16	1604..
PTSN R/L 16CA-16	60	25	16	53	28	25	20	1604..
PTSN R/L 20CA-22	70	30	20	60	30	25	20	2204..
PTSN R/L 25CA-22	100	35	25	67	37	32	25	2204..



REF.												
PTSN R/L 12CA-16	836	161	502	-	-	118	157	-	525	286	186	504
PTSN R/L 16CA-16	809	162	525	336	409	119	156	009	525	288	190	505
PTSN R/L 20CA-22	812	163	503	323	412	119	156	002	503	288	190	505
PTSN R/L 25CA-22	812	163	503	323	412	120	158	002	504	290	191	526

REF.	l	s	d
TNM.. 1604..	16,50	4,76	9,52
TNM.. 2204..	22,00	4,76	12,70

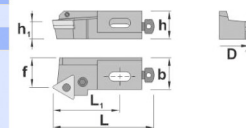




PTTN 60°



REF.	D	h	h1	L	L1	f	b	TNM..
PTTN R/L 12CA-16	50	20	12	55	55	13	16	1604..
PTTN R/L 16CA-16	60	25	16	63	38	15	20	1604..
PTTN R/L 20CA-22	70	30	20	70	40	15	20	2204..



REF.

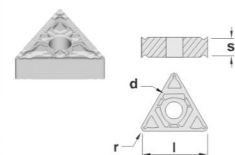


PTTN R/L 12CA-16	836 161 502 - - 118 157 - 525 286 186 504
PTTN R/L 16CA-16	809 162 525 336 409 119 156 009 525 288 190 505
PTTN R/L 20CA-22	812 163 503 323 412 119 156 002 503 288 190 505

REF.

l s d

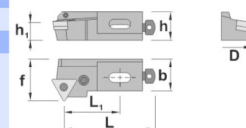
TNM.. 1604..	16,50	4,76	9,52
TNM.. 2204..	22,00	4,76	12,70



PTWN 30°



REF.	D	h	h1	L	L1	f	b	TNM..
PTWN R/L 12CA-16	50	20	12	47	27	20	16	1604..
PTWN R/L 16CA-16	60	25	16	53	28	25	20	1604..
PTWN R/L 20CA-22	70	30	20	60	30	25	20	2204..



REF.

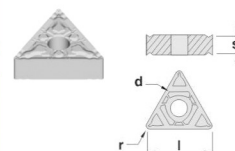


PTWN R/L 12CA-16	836 161 502 - - 118 157 - 525 286 186 504
PTWN R/L 16CA-16	809 162 525 336 409 119 157 009 525 288 190 505
PTWN R/L 20CA-22	812 163 503 323 412 119 156 002 503 288 190 505

REF.

l s d

TNM.. 1604..	16,50	4,76	9,52
TNM.. 2204..	22,00	4,76	12,70

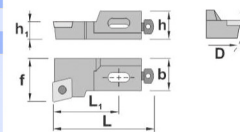




SCFC 90°



REF.	D	h	h1	L	L1	f	b	CC..
SCFC R/L 06CA-06	20	6	6	25	15	10	6	0602..
SCFC R/L 08CA-06	25	8	8	27	16	12	7	0602..
SCFC R/L 10CA-09	30	14	10	42	24	14	10	09T3..
SCFC R/L 12CA-12	40	16	12	47	35	20	14	1204..



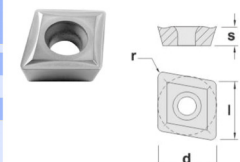
REF.



SCFC R/L 06CA-06	155	507	116	153	515	293	183	502
SCFC R/L 08CA-06	155	507	116	153	515	294	184	525
SCFC R/L 10CA-09	138	515	118	154	502	286	186	504
SCFC R/L 12CA-12	150	520	118	157	525	286	186	504

REF.

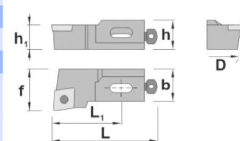
REF.	l	s	d
CC.. 0602..	6,45	2,38	6,35
CC.. 09T3..	9,65	3,97	9,52
CC.. 1204..	12,90	4,76	12,70



SCLC 95°



REF.	D	h	h1	L	L1	f	b	CC..
SCLC R/L 06CA-06	20	6	6	25	15	10	6	0602..
SCLC R/L 08CA-06	25	8	8	27	16	12	7	0602..
SCLC R/L 10CA-09	30	14	10	44	24	14	10	09T3..
SCLC R/L 12CA-12	40	16	12	47	35	20	14	1204..



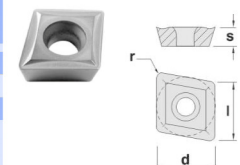
REF.



SCLC R/L 06CA-06	155	507	116	153	515	293	183	502
SCLC R/L 08CA-06	155	507	116	153	515	294	184	525
SCLC R/L 10CA-09	138	515	118	154	502	286	186	504
SCLC R/L 12CA-12	150	520	118	157	525	286	186	504

REF.

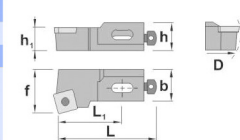
REF.	l	s	d
CC.. 0602..	6,45	2,38	6,35
CC.. 09T3..	9,65	3,97	9,52
CC.. 1204..	12,90	4,76	12,70



SSKC 75°



REF.	D	h	h1	L	L1	f	b	SC..
SSKC R/L 10CA-09	30	14	10	50	30	14	10,0	09T3..
SSKC R/L 12CA-12	40	16	12	55	35	20	14,0	1204..
SSKC R/L 16CA-12	50	20	16	63	38	25	17,5	1204..



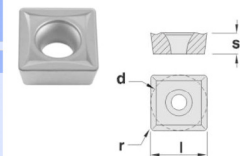
REF.



SSKC R/L 10CA-09	140	515	118	154	502	286	192	504
SSKC R/L 12CA-12	150	520	118	157	525	286	186	504
SSKC R/L 16CA-12	150	520	119	157	525	288	190	505

REF.

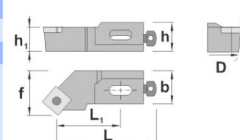
REF.	l	s	d
SC.. 09T3..	9,52	3,97	9,52
SC.. 1204..	12,70	4,76	12,70



SSSC 45°



REF.	D	h	h1	L	L1	f	b	SC..
SSSC R/L 10CA-09	30	14	10	44	24	14	10,0	09T3..
SSSC R/L 12CA-12	40	16	12	47	27	20	14,0	1204..
SSSC R/L 16CA-12	50	20	16	53	28	25	17,5	1204..



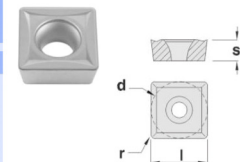
REF.



SSSC R/L 10CA-09	140	515	118	154	502	286	192	504
SSSC R/L 12CA-12	150	520	118	157	525	286	186	504
SSSC R/L 16CA-12	150	520	119	157	525	288	190	505

REF.

REF.	l	s	d
SC.. 09T3..	9,52	3,97	9,52
SC.. 1204..	12,70	4,76	12,70

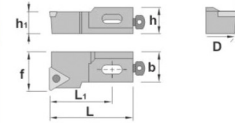




STFC 90°



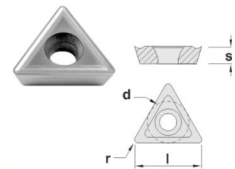
REF.	D	h	h1	L	L1	f	b	TC..
STFC R/L 08CA-11	25	8	8	36	15	10	7,0	1102..
STFC R/L 10CA-11	30	14	10	50	30	14	10,0	1102..
STFC R/L 12CA-16	40	16	12	55	35	20	14,0	16T3..
STFC R/L 16CA-16	50	20	16	63	38	25	17,5	16T3..



REF.							
STFC R/L 08CA-11	125	507	116	153	515	294	184 525
STFC R/L 10CA-11	125	507	118	154	502	286	192 504
STFC R/L 12CA-16	140	515	118	157	525	286	186 504
STFC R/L 16CA-16	140	515	119	157	525	288	190 505

REF.	l	s	d
TC.. 1102..	11,00	2,38	6,35
TC.. 16T3..	16,50	3,97	9,52

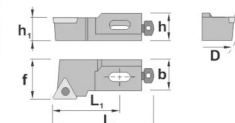
For more information see page: A.51,52



STGC 90°



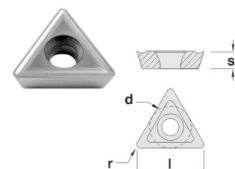
REF.	D	h	h1	L	L1	f	b	TC..
STGC R/L 10CA-11	30	14	10	50	30	14	10,0	1102..
STGC R/L 12CA-16	40	16	12	55	35	20	14,0	16T3..
STGC R/L 16CA-16	50	20	16	63	38	25	17,5	16T3..



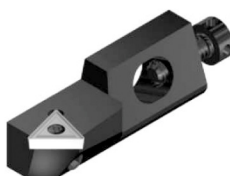
REF.							
STGC R/L 10CA-11	125	507	118	154	502	286	192 504
STGC R/L 12CA-16	140	515	118	157	525	286	186 504
STGC R/L 16CA-16	140	515	119	157	525	288	190 505

REF.	l	s	d
TC.. 1102..	11,00	2,38	6,35
TC.. 16T3..	16,50	3,97	9,52

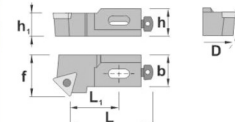
For more information see page: A.51,52



STSC 45°



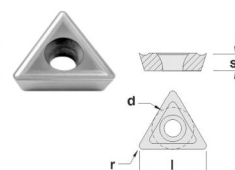
REF.	D	h	h1	L	L1	f	b	TC..
STSC R/L 08CA-11	25	8	8	27	16	10	7,0	1102..
STSC R/L 10CA-11	30	14	10	44	24	14	10,0	1102..
STSC R/L 12CA-16	40	16	12	47	27	20	14,0	16T3..
STSC R/L 16CA-16	50	20	16	53	28	25	17,5	16T3..



REF.							
STSC R/L 08CA-11	125	507	116	153	515	294	184 525
STSC R/L 10CA-11	125	507	118	154	502	286	192 504
STSC R/L 12CA-16	140	515	118	157	525	286	186 504
STSC R/L 16CA-16	140	515	119	157	525	288	190 505

REF.	l	s	d
TC.. 1102..	11,00	2,38	6,35
TC.. 16T3..	16,50	3,97	9,52

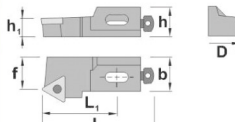
For more information see page: A.51,52



STTC 60°



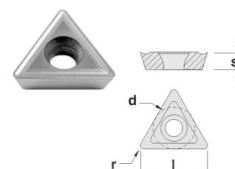
REF.	D	h	h1	L	L1	f	b	TC..
STTC R/L 08CA-11	25	8	8	27	15	6	7,0	1102..
STTC R/L 10CA-11	30	14	10	50	30	9	10,0	1102..
STTC R/L 12CA-16	40	16	12	55	35	13	14,0	16T3..
STTC R/L 16CA-16	50	20	16	63	38	15	17,5	16T3..



REF.							
STTC R/L 08CA-11	125	507	116	153	515	294	184 525
STTC R/L 10CA-11	125	507	118	154	502	286	192 504
STTC R/L 12CA-16	140	515	118	157	525	286	186 504
STTC R/L 16CA-16	140	515	119	157	525	288	190 505

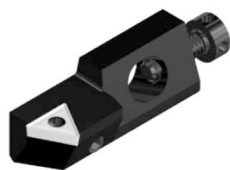
REF.	l	s	d
TC.. 1102..	11,00	2,38	6,35
TC.. 16T3..	16,50	3,97	9,52

For more information see page: A.51,52

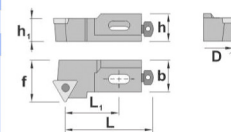




STWC 60°

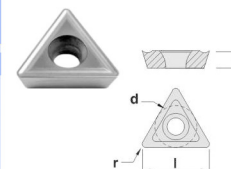


REF.	D	h	h1	L	L1	f	b	TC..
STWC R/L 08CA-11	25	8	8	27	16	10	7,0	1102..
STWC R/L 10CA-11	30	14	10	44	24	14	10,0	1102..
STWC R/L 12CA-16	40	16	12	47	27	20	14,0	16T3..
STWC R/L 16CA-16	50	20	16	53	28	25	17,5	16T3..

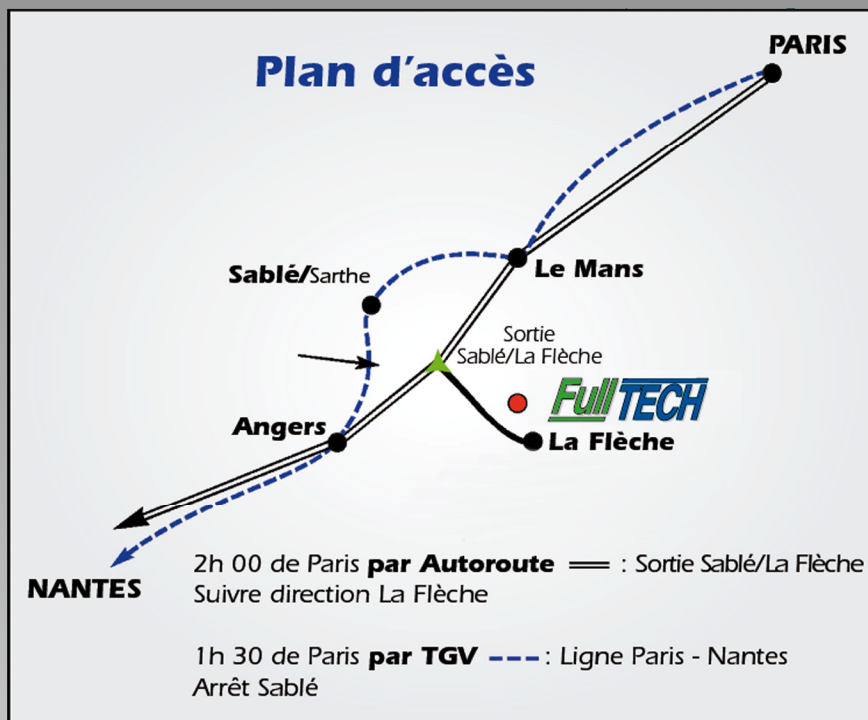


REF.							
STWC R/L 08CA-11	125	507	116	153	515	294	184 525
STWC R/L 10CA-11	125	507	118	154	502	286	192 504
STWC R/L 12CA-16	140	515	118	157	525	286	186 504
STWC R/L 16CA-16	140	515	119	157	525	288	190 505

REF.	l	s	d
TC.. 1102..	11,00	2,38	6,35
TC.. 16T3..	16,50	3,97	9,52



For more information see page: A.51,52



FULLTECH SARL

Parc d'activités de La Bertraie
BP 50011 - 72201 LA FLECHE CEDEX
Tél : 02.43.48.19.72
Fax : 02.43.48.19.76

*E-mail : fulltech@wanadoo.fr
www.fulltech.fr*

Votre contact : Thierry PASQUET